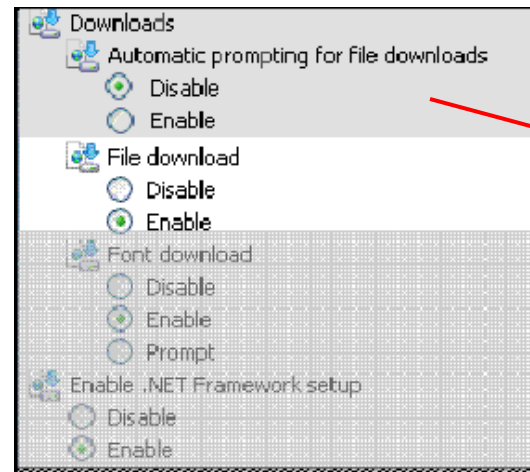
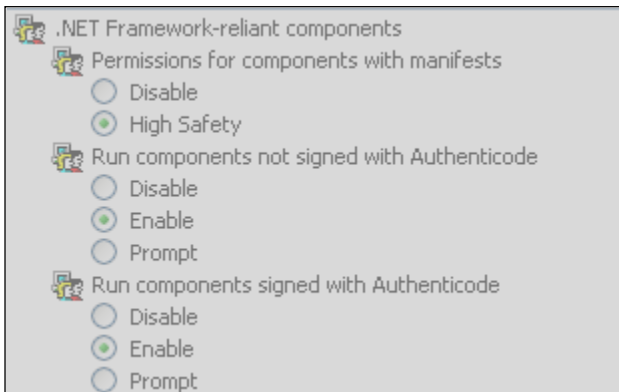
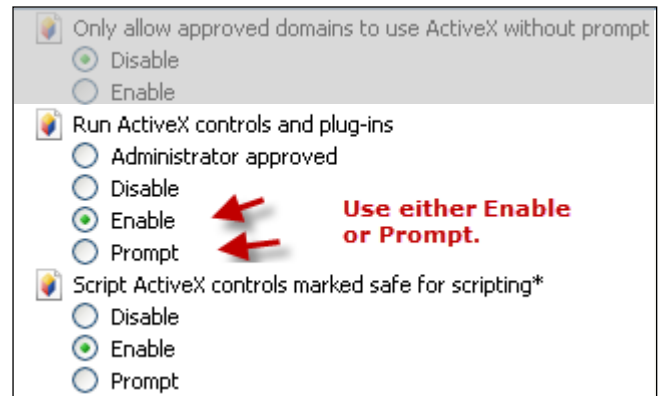
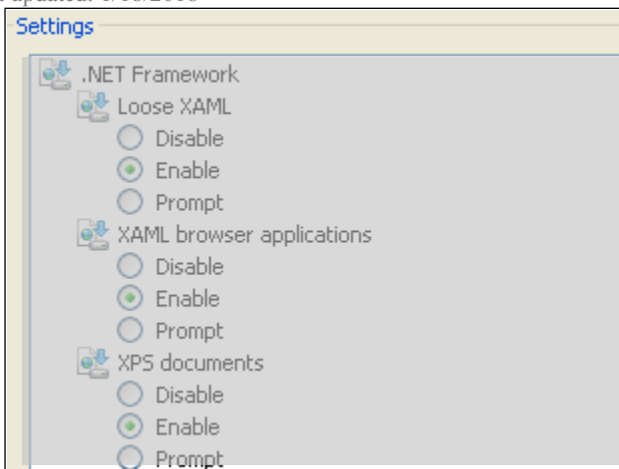
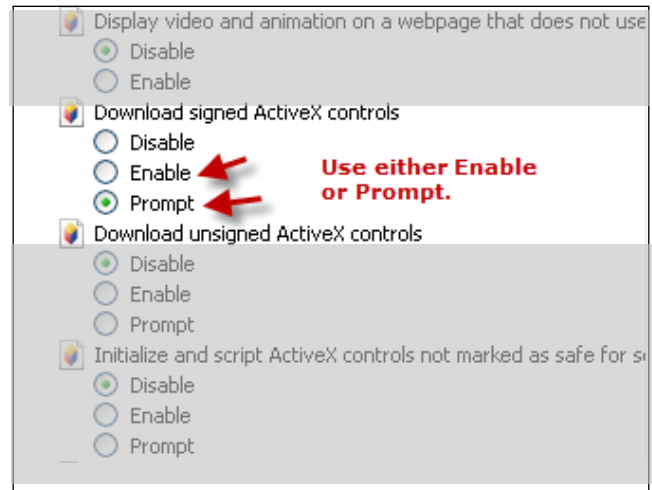


# Internet Explorer 11 Option Settings for Premier ERP/SCM and for Tabs

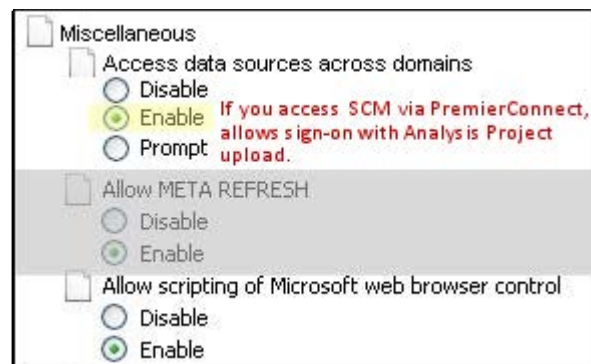
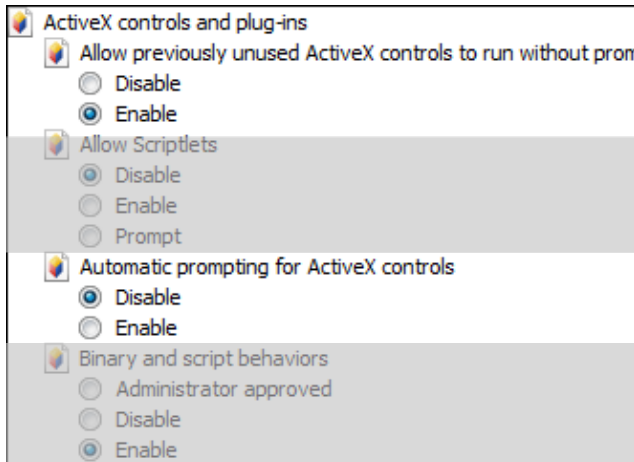
This document displays Internet Explorer option settings needed by Premier ERP/SCM, and explains how to enable tabs.

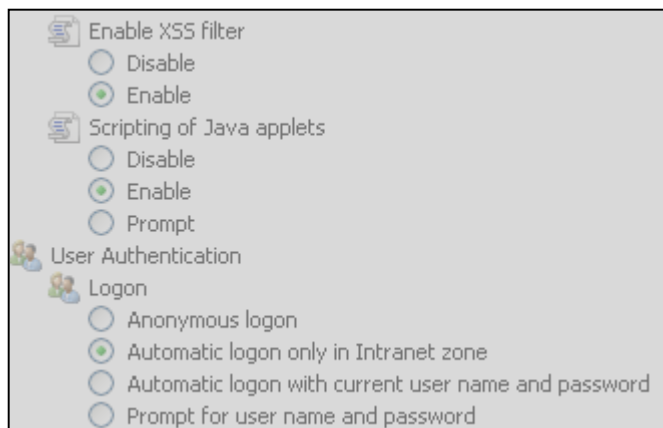
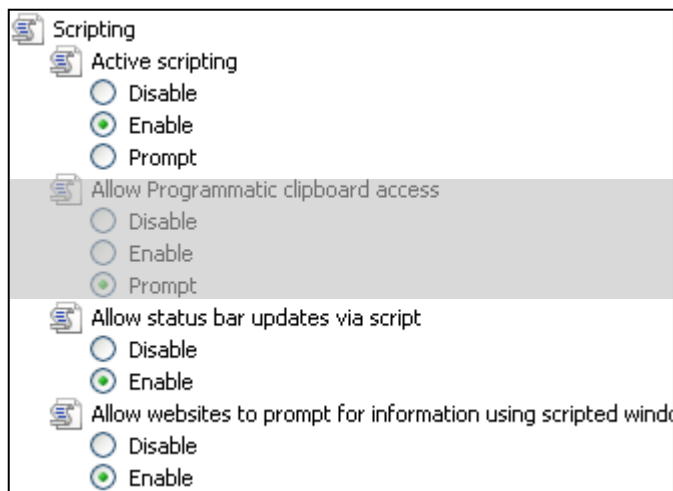
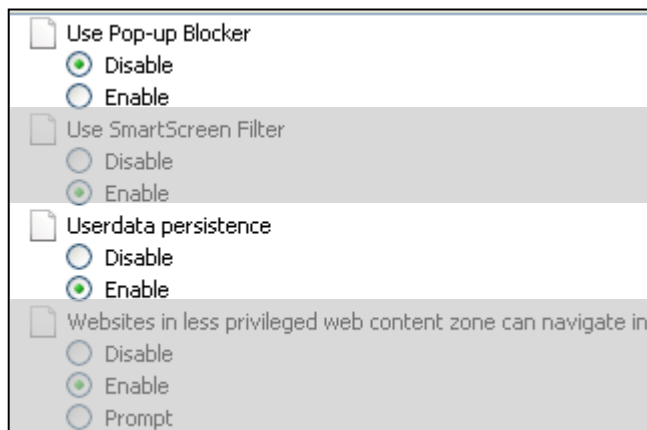
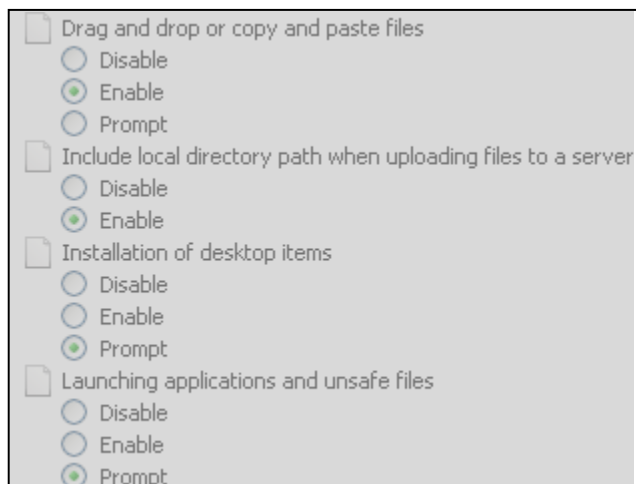
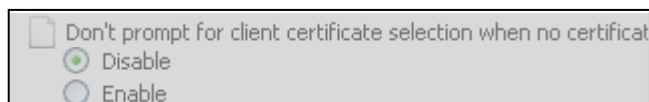
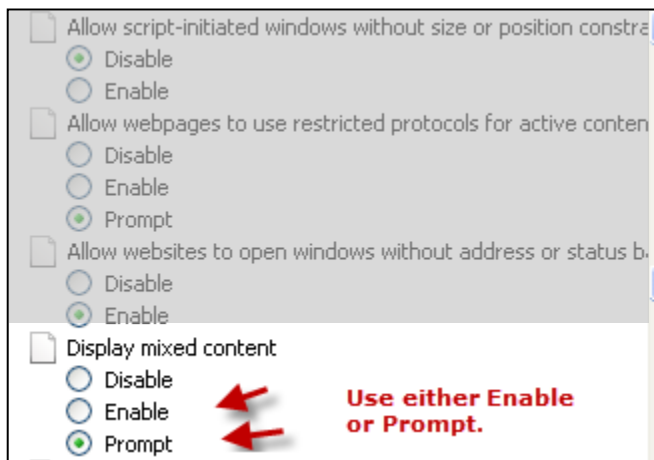
- Options that are *not* grayed out affect the system. Manually set these options as displayed, *if your default is different from the setting on these pages*. For some options, either **Enable** or **Prompt** is appropriate – but **not Disable**. If prompts are annoying use the **Enable** setting.
- Options not relevant to the system are grayed out and show the default *Custom* setting for the *Trusted* zone as implemented by Microsoft when you select “Reset custom settings” at *Medium* security. For these grayed-out options, either use the default, or use settings consistent with your site’s security policy. You may wish to discuss these options with your IT staff.
- Keep in mind that setting options for Internet Explorer is not an “exact science,” and is affected by factors such as your security/anti-virus software. Thus, you may need to experiment with settings, consistent with your site’s security standards, to get the desired results.

Last updated: 1/18/2018



See Note below.





**Note:** (continued)

Explorer did not download a file because of security. If this situation occurs, you can proceed to download the file, or change the setting on this option to remove the information bar, and try the download again.

To proceed to download a file:

- Click the Information Bar message, and OK the download. Then, repeat the download. This time, the standard File Download panel appears, and you can proceed to open the file.
- Alternately, setting the option to *Enable* -- if consistent with your site's security policy -- may avoid problems with downloads.

**Note:** *Automatic prompting for file downloads* specifies how you do uploads and downloads. This option seems highly dependent on factors such as your security system settings (e.g., McAfee, Norton), how you are opening a download, etc. You may need to try both *Enable* and *Disable* to get the results that you wish. For example, when this option is set to *Disable*, you may get a message on the Information Bar that Internet

## Setting Tabs

Premier ERP/SCM

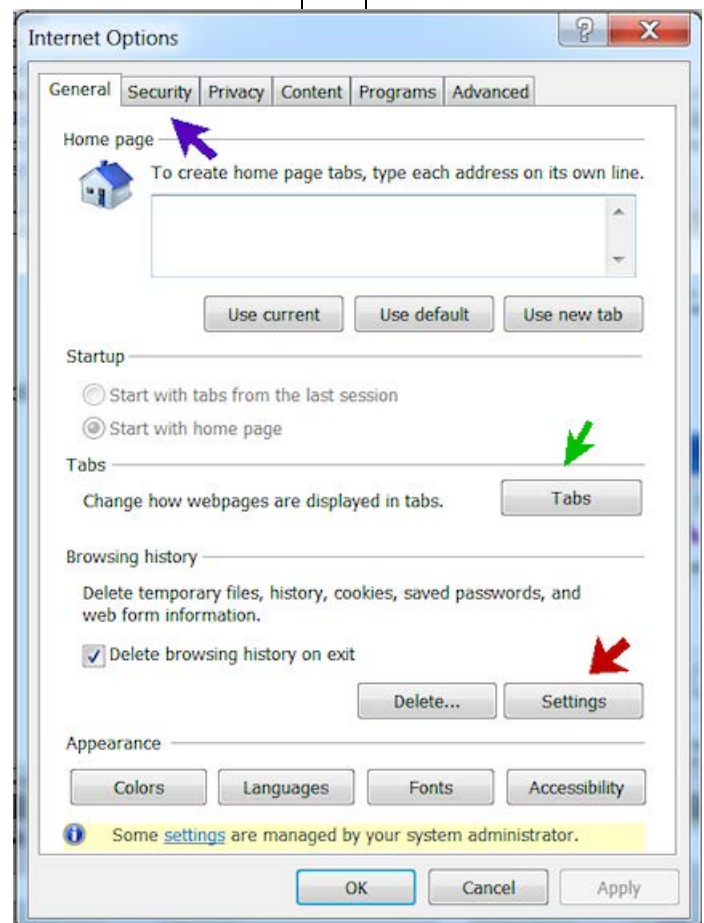
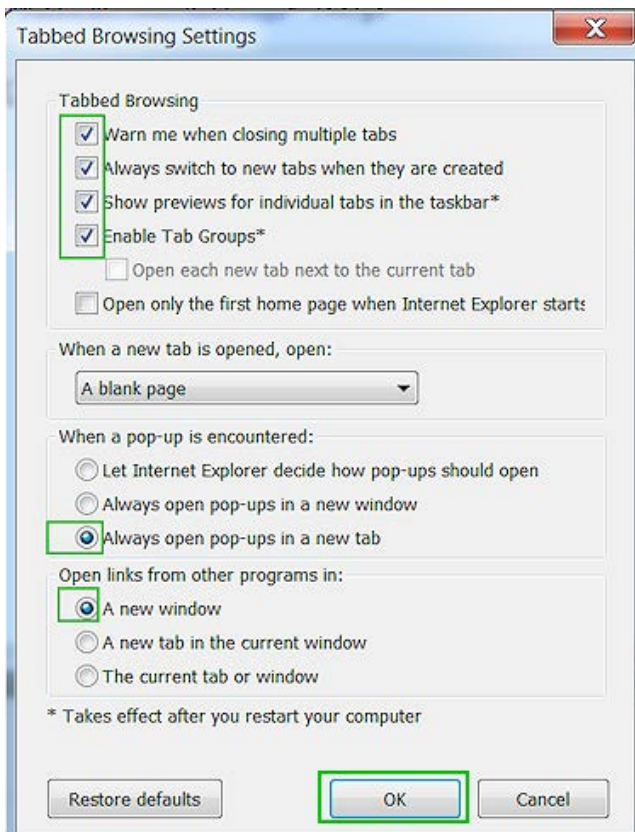
### To turn on tabs for the browser:

1. On the General page, click **Tabs**.

2. Select the settings as shown in the green boxes.

Click **OK** to exit the Tabbed Browsing Settings panel, and the Internet Options panel.

2

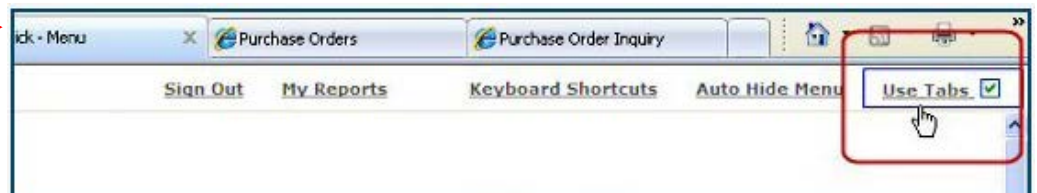


### To turn on tabs for Premier ERP/SCM:

- Log on to the system.
- At the top of the Welcome Page, click **Use Tabs**.

A check mark appears in the box. Tabs are enabled.

**Note:** You can turn tabs off by clicking Use Tabs again.



## Internet Explorer Cookie Settings

Several settings are needed in Internet Explorer for cookies. Below is the location of the settings. Set these options as indicated in the figure.

1. From the Internet Explorer panel top right margin, click the settings icon (Figure 1).
2. Click **Internet Options** (Figure 1). The *Internet Options* panel appears (Figure 2).
3. Click the Privacy tab (Figure 2).
4. Click the Advanced tab (Figure 2).
5. Set the options for cookies as displayed in Figure 2.
6. Click **OK** when you are finished.
7. Click **OK** again to leave the Internet Options.

Figure 1 – Opening Internet Explorer

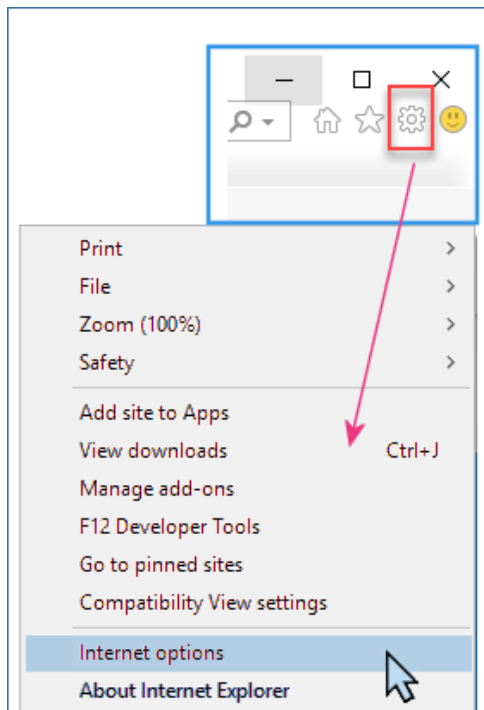


Figure 2 – Setting Cookie Options for IE

